

## PixelControl Wide Top LED Neon

PLNW-RGB-10M

### PRODUCT DESCRIPTION

Create impressive eye catching light installations with PixelControl Wide Top LED Neon without all the hassles of traditional glass neon. Our PixelControl Wide Top LED Neon has an integrated diffuser that is wider and taller than standard RGB LED Neon, allowing for more light to be seen from the side and top of this LED Neon strip. This neon is durable, flexible, energy efficient, and creates some of the most eye catching and impressive dynamic displays! PixelControl Wide Top LED Neon lets you create millions of colors with red-green-blue color mixing, allowing for endless possibilities. With its integrated chips, you're able to control each individual LED pixel/ cut segment which lets you create chasing scenes and effects.

It is easy to control using DMX along with one of the DMX Decoders or by going directly to SPI using one of the Pixel Products below.

#### Compatible DMX Controllers:

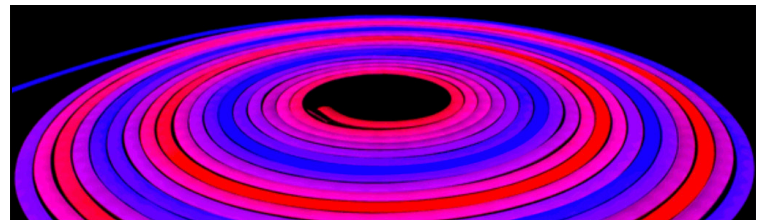
- DMX512-pixelcontrol
- DMX512-PX-V2

#### Compatible Pixel Controllers [not exhaustive]:

- DiGidot C4 Live
- DiGidot C4 Extended
- Enttec Pixelator & Plink
- Madrix Nebula

### TECHNICAL SPECIFICATIONS

Product Number	PLNW-RGB-10m
Color	RGB
Operating Voltage	24 DC
Power Draw	120 Watts
LED Density	56 LEDs/meter
LED Node Size	5050
Cutting Increment	4.92 in [125 mm]
Width	0.46 in [11.6 mm]
Height	1.14 in [29 mm]
Length	32.1 ft [10 m]
IP Rating	IP67
Ambient Working Temp	-20°C to -20°C -4°F to -4°F
LEDs per Pixel	7 LEDs
IC Chip Type	UCS2903



### PRODUCT FEATURES



Beam Angle  
160°



Bending  
Diameter



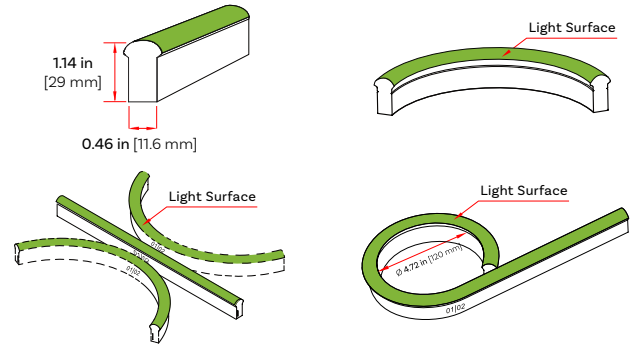
IP67  
Protection



5 Year  
Warranty

- High color consistency & smooth illumination with no hot spots
- Bending diameter of 1.18 in [30 mm]
- Easy installation and assembly with accessories for joining and terminating
- Pixel Addressable
- Cuttable every 7 LEDs & Continuous run lengths up to 5 and 10 meters
- UL Listed and RoHS Compliant

### DIMENSIONS OF LIGHT



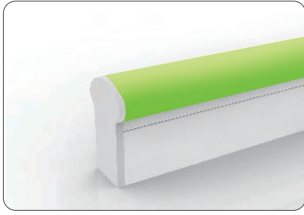
### OPTIC PARAMETERS

Article No.	PLNW-RGB-10m
LED Type	RGB
Beam Angle 50%	160°
Color	PLNW-RGB-10m
Red	623 nm
Green	522 nm
Blue	472 nm

TYPES OF CONNECTOR

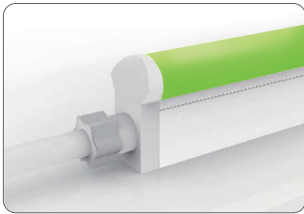
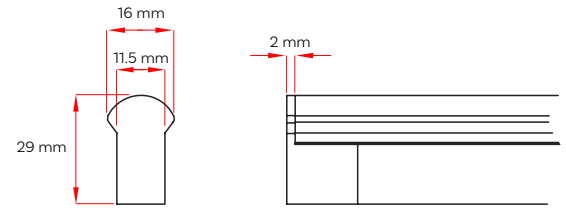
INJECTION-MOLDED CONNECTORS

Note: Unless otherwise stated, the tolerance of the connector is  $\pm 0.5$  mm.



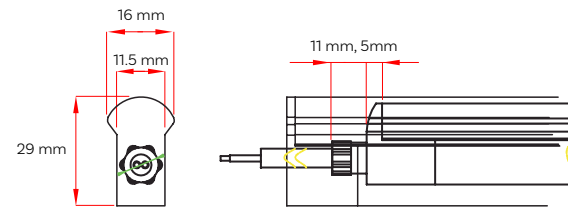
**Injection-Molded End Cap**

Custom Injection Molded Head End for ProFlex LED Neon, with Head End Cap. Cable measures 2 m.



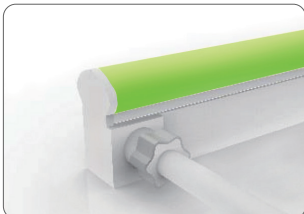
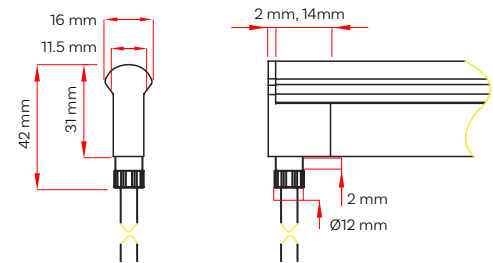
**Injection-Molded Front Connector (top)**

Custom Injection-Molded tail end for ProFlex LED Neon, with front cable exit. Cable measures 2 m.



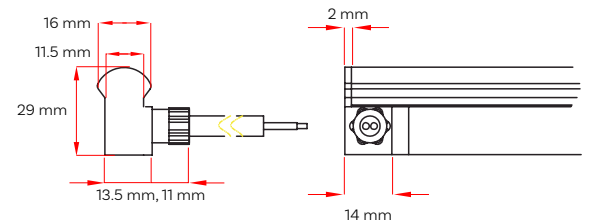
**Injection-Molded Front Connector (bottom)**

Custom Injection-Molded head end for ProFlex LED Neon, with bottom cable exit. Cable measures 2 m.



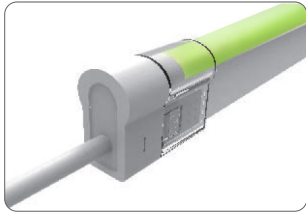
**Injection-Molded Front Connector (side)**

Custom Injection-Molded tail end for ProFlex LED Neon, with side (right and left) cable exit. Cable measures 2 m.



SNAP CONNECTORS

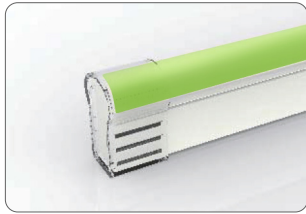
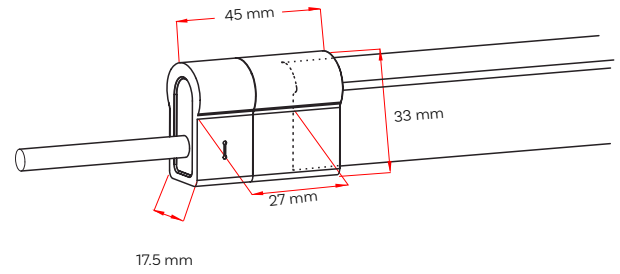
Note: Unless otherwise stated, the tolerance of the connector is  $\pm 0.5$  mm.



**Front/Tail End Connector**

Connects RGB, RGBW and single color LED Neon to the power supply or controller.

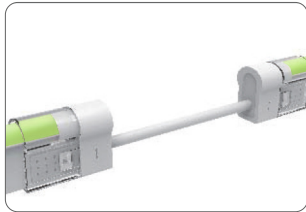
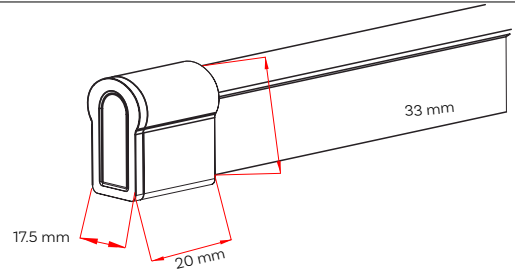
Height: 1.29 in [33 mm]  
Length: 1.83 in [46.5 mm]  
Width: 0.86 in [21.8 mm]  
Cable: 6 ft [1.8 m]



**Front/Tail End Cap**

Termination protection of the light for RGB, RGBW and single color LED Neon.

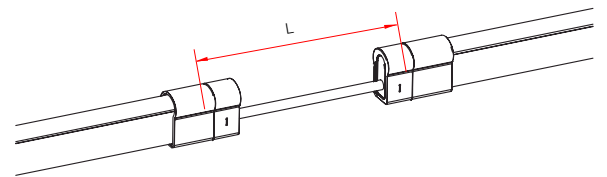
Height: 1.29 in [33 mm]  
Length: 1.83 in [46.5 mm]  
Width: 0.86 in [21.8 mm]



**Jumper**

Connects two pieces of lights together with a flexible cable for RGB, RGBW and single color LED Neon.

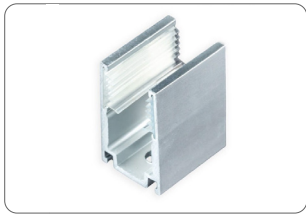
Height: 1.29 in [33 mm]  
Length: 14.3 in [363.2 mm]  
Width: 0.45 in [11.43 mm]  
Cable Length: 1 ft [0.30 m]



MOUNTING PROFILE

STANDARD ALUMINUM PROFILE

Note: Unless otherwise stated, the tolerance of the connector is  $\pm 0.5$  mm.

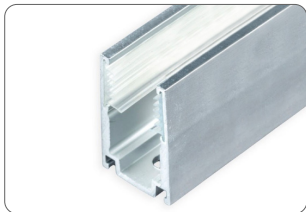
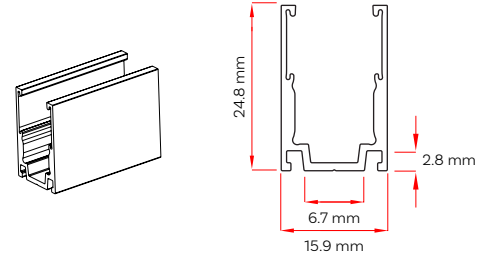


**Secure Grip Mounting Clip**

*LN-U-SG-Clip*

Designed for mounting LED Neon and holding it in place. The clip has grips that securely holds neon in the clip. Clip comes with one screw.

Length: 0.79 in [20.1 mm]  
Width: 0.62 in [15.7 mm]

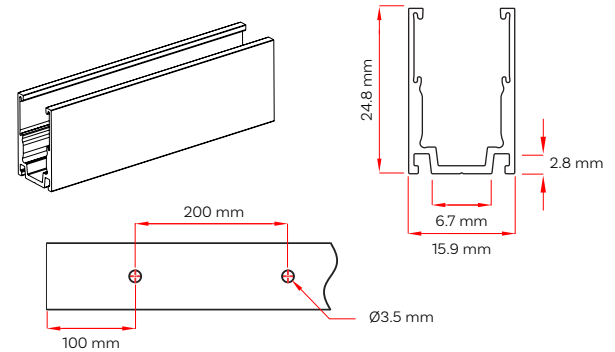


**Secure Grip Mounting Channel**

*LN-U-SG-2m*

Ideal for mounting LED Neon upside down and in exterior applications, this channel has rubber grips that securely fasten to the neon without damaging its outer casing.

Length: 6.6 ft [2 m]  
Width: 0.62 in [15.7 mm]

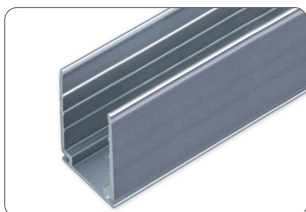
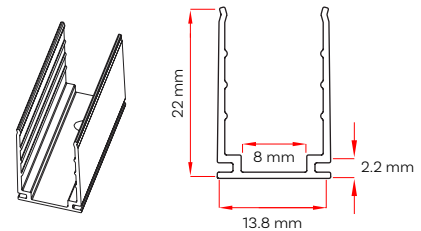


**LED Neon and ProFlex LED Neon Mounting Clip**

*LN-U-CLIP-35mm*

Designed for mounting LED Neon and holding it in place. LED Neon fits snugly with no need for adhesive or additional fasteners to hold the neon in the channel. Clip has one hole pre-drilled and comes with one screw.

Length: 1.37 in [34.7 mm]  
Width: 0.54 in [13.7 mm]



**LED Neon and ProFlex LED Neon Mounting Channel**

*LN-U-2m*

Designed for mounting LED Neon and holding it in place. LED Neon fits snugly with no need for adhesive or additional fasteners to hold the neon in the channel. Channel has 10 holes pre-drilled and comes with 10 screws.

Length: 6.6 ft [2 m]  
Width: 0.54 in [13.8 mm]

